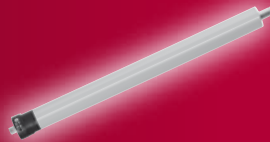
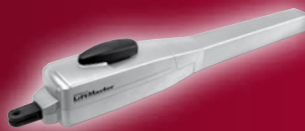
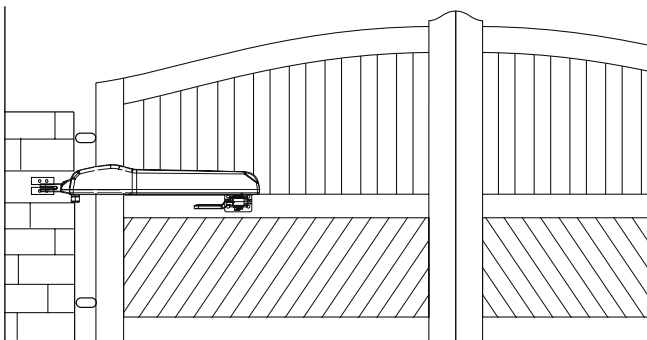


GATE OPERATORS

LiftMaster



Visit our
Dealer Extranet
and benefit!



2-Year Full warranty
Install all equipment in
compliance with EN60335-2-103.
Type tested.

High quality accessories included in the carton



**3-channel mini
remote control
94335E**



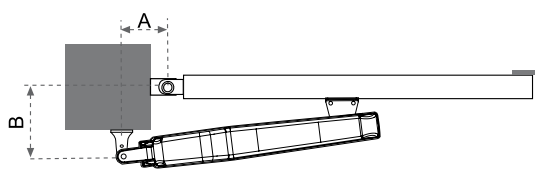
**Receiver
801221**



**IR Sensor
772E**



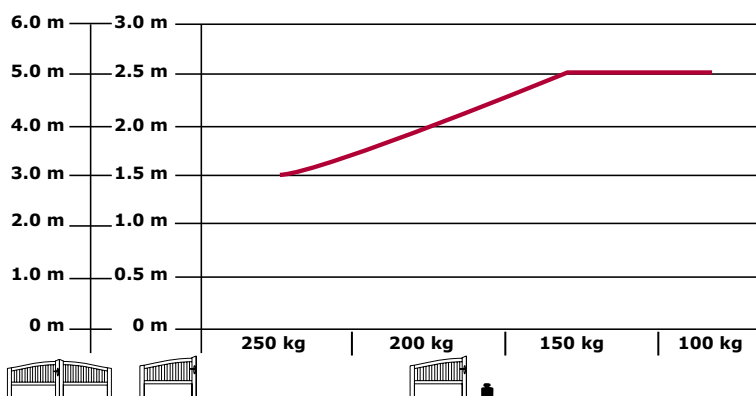
Control 24 V



For an opening angle of 90°-105°

Measure A: 12-13 cm

Measure B: 13-14 cm



Optional accessories



9747E
Locking device



FLA1-LED
Flashing light kit

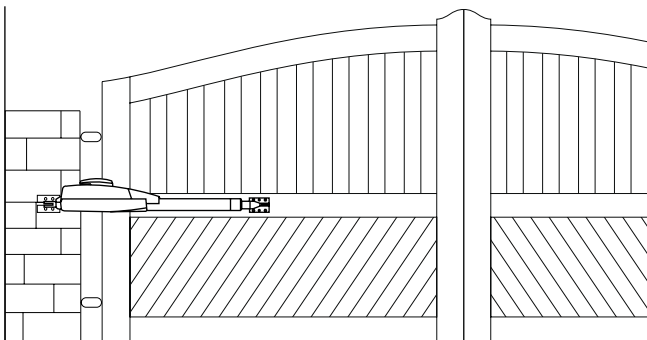
Technical Data

		SCS200
Voltage IN	V AC	220-240
Frequency	Hz	50
Motor voltage	V	24
Power (nom.)	W	40
Current (max.)	A	1.3
Thrust (rated)	N	300
Capacitor	µF	-
Thermal overload protection	°C	-
Motor speed	rpm	2,800
Travel speed (arm)	mm/s	~25
Duty cycle	cycles/h	~5-10
Working temperature range	°C	-20/+55
Protection class		I
Degree of protection	IP	44
Product weight (Arm)	kg	5

For more accessories please refer to the price book.

Model & carton content chart

Model	Drive unit	Install brackets	Electronic distance limits	Electronic control	Battery backup	Remote control 94335E	Receiver & radio 801221	IR sensor 772E	Flashing light FLA1-LED	Key switch COM18010	Antenna kit ANT4X-1LM
SCS200K	2 x	•	•	•	•	1 x	433 MHz	•	optional	optional	optional



2-Year Full warranty
Install all equipment in
compliance with EN60335-2-103.
Type tested.

High quality accessories included in the carton SCS300K | SCS300K-124 | SCS300K-120



**3-channel mini
remote control
94335E**



**Receiver
801221**



**IR Sensor
772E**

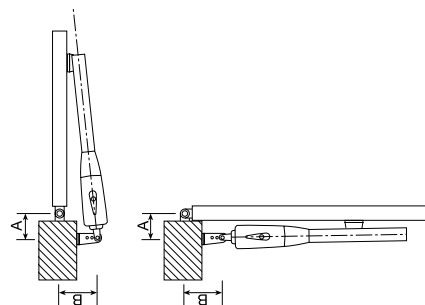


**Control 230 V
CB11**

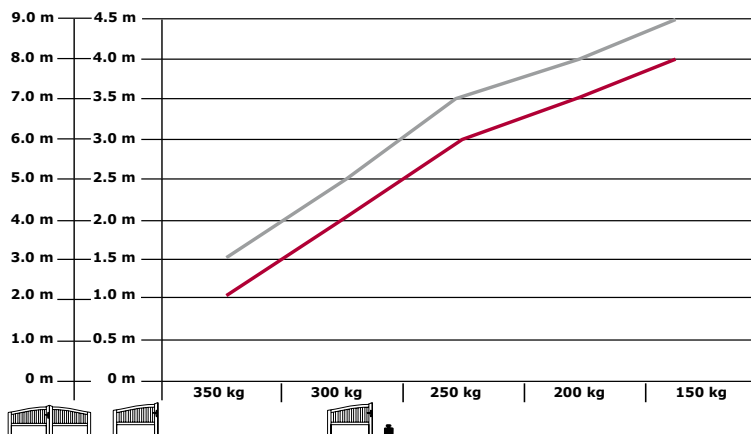


**Control 24 V
CB124**

A=15 cm	≈90°	A			
B=15 cm		12 cm	14 cm	16 cm	18 cm
B	10 cm	115°	112°	110°	105°
	12 cm	110°	105°	101°	90°
	14 cm	108°	95°	90°	85°
	16 cm	106°	90°	85°	



SCS300
SCS300-24



Optional accessories



772E Infrared safety sensor



FLA1-LED Flashing light kit

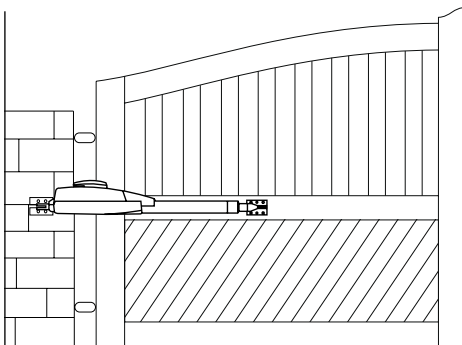
For more accessories please refer to the price book.

Technical Data

		SCS300	SCS300-24	SCS300-120
Voltage IN	V AC	220-240	220-240	127
Frequency	Hz	50	50	60
Motor voltage	V	230 AC	24 DC	127 AC
Power (nom.)	W	280	48	280
Current (max.)	A	1.2	2	2.4
Thrust (rated)	N	250	250	250
Capacitor	µF	6.3	-	25
Thermal overload protection	°C	140	-	140
Motor speed	rpm	1,400	2,400	1,400
Travel speed (arm)	mm/s	~20	~25	~20
Travel	mm	300	300	300
Duty cycle	cycles/h	~20	~70	~20
Working temperature range	°C	-20/+55	-20/+55	-20/+55
Protection class		I	I	I
Degree of protection	IP	44	44	44
Product weight (~)	kg	6.5	6.5	6.5

Model & carton content chart

Model	Drive unit	Install brackets	Hard stops	Capacitor	Elec-tronic control	Battery backup	Remote control 94335E	Receiver & radio 801221	IR sensor 772E	Flashing light FLA1-LED	Key switch COM18010	Antenna kit ANT4X-1LM	Number of cartons
SCS300	1 x	•	•	•									1
SCS300-24	1 x	•											1
SCS300K	2 x	•	•	•	•		2 x	433 MHz	•	optional	optional	optional	4
SCS300K-124	2 x	•	•		•	•	2 x	433 MHz	•	optional	optional	optional	4
SCS300K-120	2 x	•	•	•	•		2 x	433 MHz	•	optional	optional	optional	4



2-Year Full warranty
Install all equipment in
compliance with EN60335-2-103.
Type tested.

High quality accessories included in the carton



**3-channel mini
remote control
94335E**



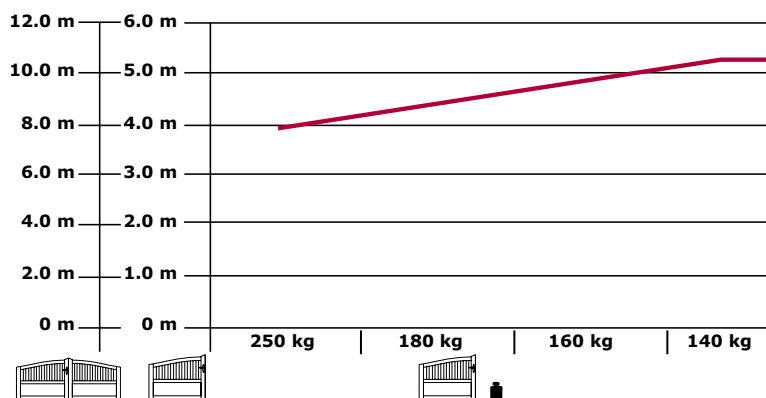
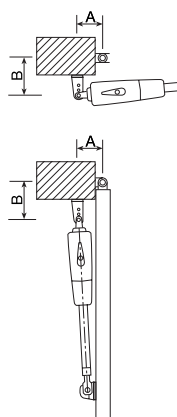
**Receiver
801221**



**IR Sensor
772E**



**Control 24 V
CB124**



A=19 cm B=19 cm	~90°	A							
		14 cm	16 cm	18 cm	20 cm	22 cm	24 cm	26 cm	
B	14 cm	105°	120°	125°	111°	105°	99°	95°	
	16 cm	103°	118°	113°	102°	98°	94°	90°	
	18 cm	111°	115°	105°	97°	93°	90°		
	20 cm	109°	103°	95°	90°	85°			
	22 cm	106°	95°	90°					
	24 cm	95°							
	26 cm								

Optional accessories



772E Infrared safety sensor



FLA1-LED Flashing light kit

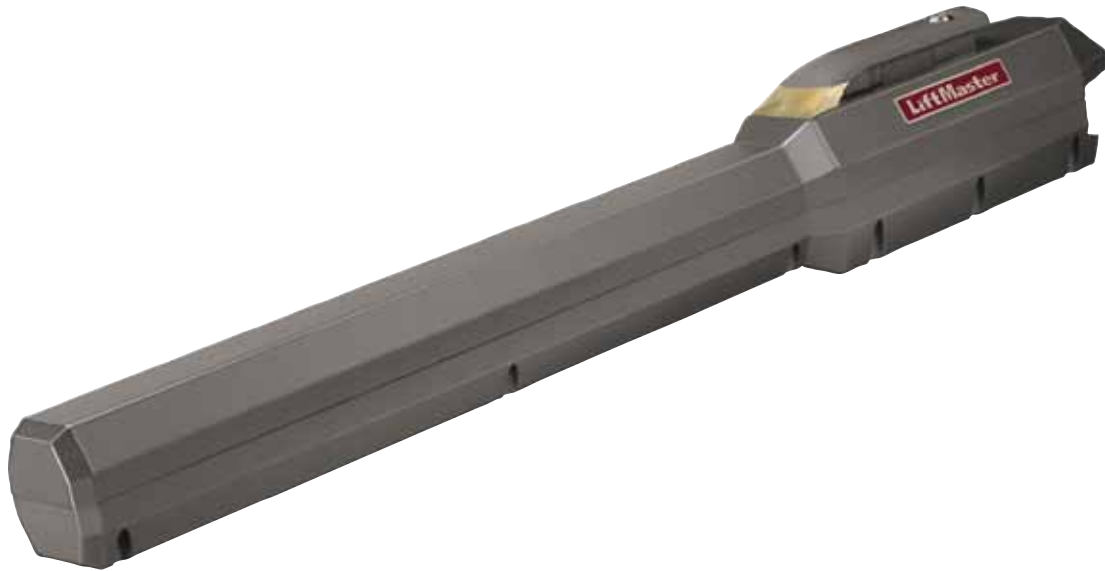
For more accessories please refer to the price book.

Technical Data

		LYN400-24
Voltage IN	V AC	220-240
Frequency	Hz	50
Motor voltage	V	24 DC
Power (nom.)	W	48
Current (max.)	A	2
Thurst (rated)	N	250
Capacitor	µF	-
Thermal overload protection	°C	-
Motor speed	rpm	2,400
Travel speed (arm)	mm/s	20
Travel	mm	400
Duty cycle	cycles/h	~50
Working temperature range	°C	-20/+55
Protection class		I
Degree of protection	IP	44
Product weight (~)	kg	7
Max. gate wing length by 250 kg	m	4
Max. gate weight at max. wing length incl. 20% reserve	kg	250

Model & carton content chart

Model	Drive unit	Install brackets	Capacitor	Elec-tronic control	Battery backup	Remote control 94335E	Receiver & radio 801221	IR sensor 772E	Flashing light FLA1-LED	Key switch COM18010	Antenna kit ANT4X-1LM	Number of cartons
LYN400-24	1 x	•										1
LYN400K-124	2 x	•		•	•	2 x	433 MHz	•	optional	optional	optional	4



2-Year Full warranty
Install all equipment in compliance with EN60335-2-103. Type tested.

High quality accessories included in the carton SCS500K-124 | SCS500-24



3-channel mini remote control 94335E



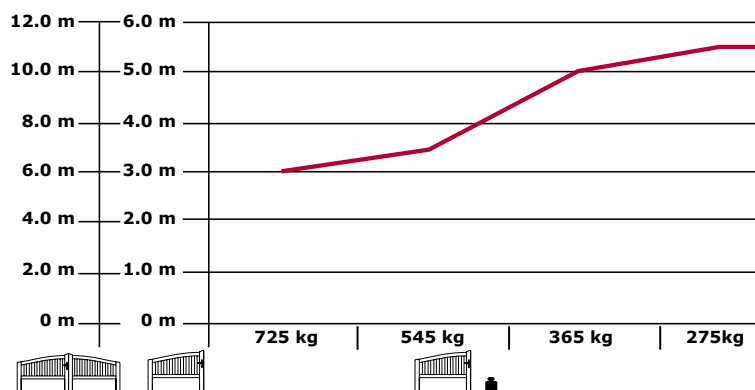
Receiver 801221



IR Sensor 772E



Control 24 V CB124



Optional accessories



772E Infrared safety sensor



FLA1-LED Flashing light kit

For more accessories please refer to the price book.

Technical Data

		SCS500-24
Voltage IN	V AC	220-240
Frequency	Hz	50
Motor voltage	V	24 DC
Power	W	240
Current	A	10
Capacitor	µF	-
Thermal overload protection	°C	-
Travel speed (arm)	90°	20 s
Travel	mm	510
Duty cycle	cycles/h	12
Working temperature range	°C	-20/+55
Protection class		I
Degree of protection	IP	44
Product weight (~)	kg	10
Max. gate wing length by 275 kg	m	5.5
Max. gate weight	kg	725

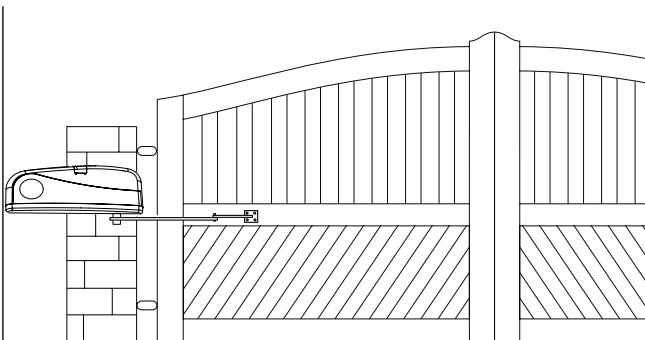
Model & carton content chart

Model	Drive unit	Install brackets	Hard stops	Capacitor	Elec-tronic control	Battery backup	Remote control 94335E	Receiver & radio 801221	IR sensor 772E	Flashing light FLA1-LED	Key switch COM18010	Antenna kit ANT4X-1LM	Number of cartons
SCS500-24*	1 x	•											1
SCS500K-124*	2 x	•			•	•	2 x	433 MHz	•	optional	optional	optional	4

*available 2nd half of 2012

LiftMaster

Chamberlain GmbH
Alfred-Nobel-Straße 4
D-66793 Saarwellingen
www.liftmaster.eu



2-Year Full warranty
Install all equipment in
compliance with EN60335-2-103.
Type tested.

High quality accessories included in the carton



**3-channel mini
remote control
94335E**



**Receiver
801221**



**IR Sensor
772E**



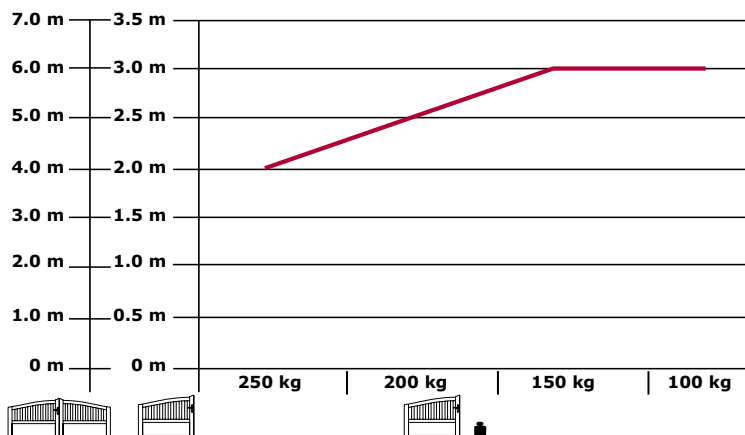
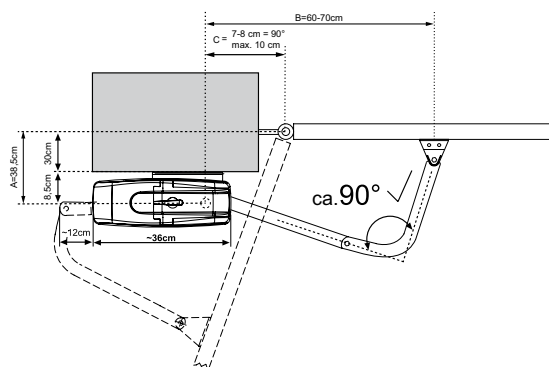
Control 24 V



**Base plate
standard
ART-7**



**Drive arm
ART-3AL**



Optional accessories



ART-2 2 m Gate arm



ART-6 Base plate narrow fit



ART-4 External release lock for gates



ART-5 Internal release lock for gates

Technical Data

		ART200
Voltage IN	V AC	220-240
Frequency	Hz	50
Motor voltage	V	24
Power (nom.)	W	40
Current (max.)	A	1.3
Torque (max.)	Nm	200
Capacitor	µF	-
Thermal overload protection	°C	-
Motor speed	rpm	2,800
Opening time 90 degree	sec	~25
Duty cycle	cycles/h	~20
Working temperature range	°C	-20/+55
Protection class		I
Degree of protection	IP	44
Product weight (~)	kg	5

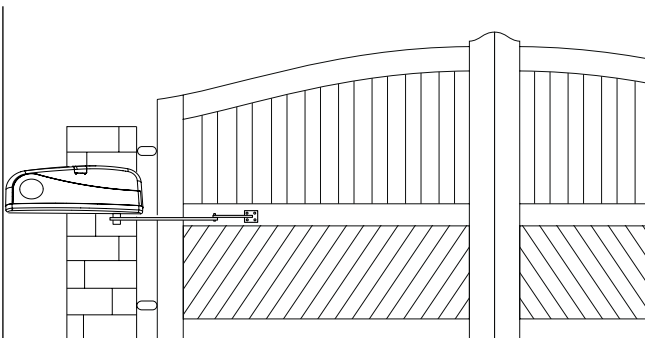
For more accessories please refer to the price book.

Model & carton content chart

Model	Drive unit w. cover	Electronic distance limits	Transformer	Electronic control	Monting plate ART-7*	Drive arm ART-3AL**	Remote control 94335E	Receiver & radio 801221	IR sensor 772E	Flashing light FLA1-LED	Key switch COM18010	Antenna kit ANT4X-1LM	Number of cartons
ART200K	2 x	•	•	•	•	•	1 x	433 MHz	•	optional	optional	optional	8

*ART-7 Standard wide fit post bracket

**ART-3AL Aluminium design door arm



2-Year Full warranty
Install all equipment in compliance with EN60335-2-103.
Type tested.

High quality accessories included in the carton ART300K | ART300K-124



3-channel mini remote control 94335E



Receiver 801221



IR Sensor 772E



Control 230 V CB11



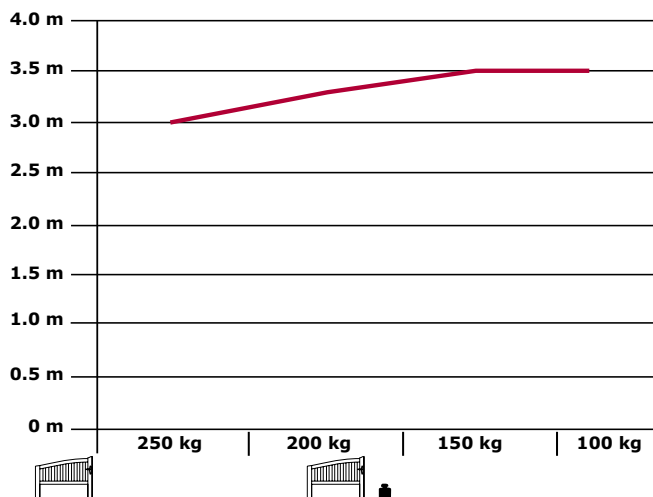
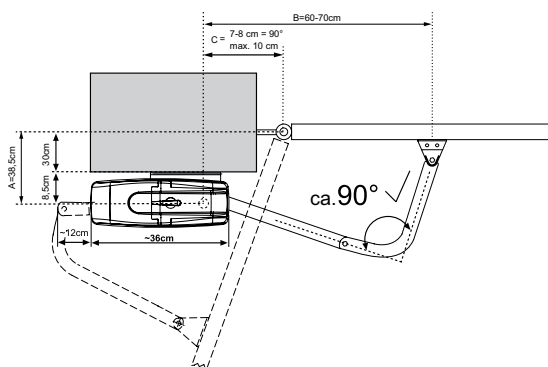
Control 24 V CB124



Base plate standard ART-7



Drive arm ART-3AL



Optional accessories



ART-1 1 m Folding door arm



ART-2 2 m Gate arm



ART-5 Internal release lock for gates



ART-3 3 m Gate arm



ART-6 Base plate narrow fit



ART-4 External release lock for gates

For more accessories please refer to the price book.

Technical Data

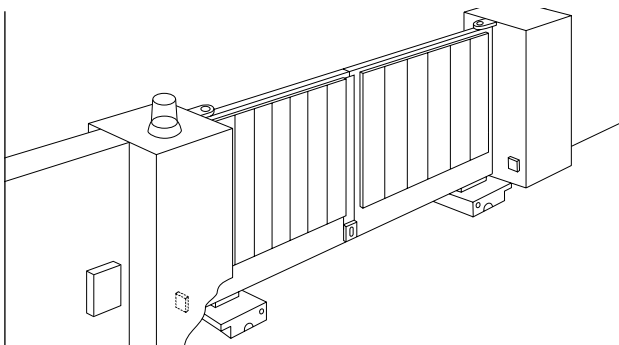
		ART300	ART300-124
Volatage IN	V AC	220-240	220-240
Frequency	Hz	50	50
Motor voltage	V	230	24
Power (nom.)	W	400	60
Current (max.)	A	1.8	2.5
Torque	N	350	280
Capacitor	µF	10	-
Thermal overload protection	°C	140	not required
Motor speed	rpm	1,400	1,800
Opening Time 90 degree	sec	~14	~12
Duty cycle	cycles/h	~20	~50
Working Temperature range	°C	-20/+55	-20/+55
Protection class		I	I
Degree of protection	IP	44	44
Product weight (~)	kg	6	9

Model & carton content chart

Model	Drive unit with cover	Capacitor	Limit switch	Electronic control	Mounting plate ART-7*	Drive arm ART-3AL**	Remote control 94335E	Receiver & radio 801221	IR sensor 772E	Flashing light FLA1-LED	Key switch COM18010	Antenna kit ANT4X-1LM	Number of cartons
ART300	1 x	•	•										1
ART300K	2 x	•	•	•	•	•	2 x	433 MHz	•	optional	optional	optional	8
ART300-124	1 x		•										1
ART300K-124	2 x		•	•	•	•	2 x	433 MHz	•	optional	optional	optional	8

*ART-7 Standard wide fit post bracket

**ART-3AL Aluminium design door arm



2-Year Full warranty
Install all equipment in
compliance with EN60335-2-103.
Type tested.



**3-channel mini
remote control
94335E**



**Receiver
801221**



**IR Sensor
772E**



**Control 230 V
CB11**



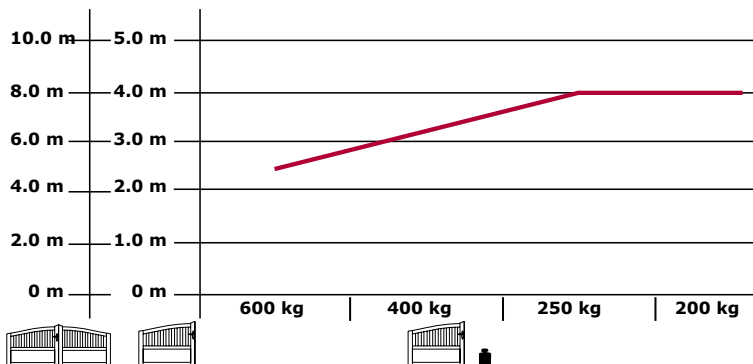
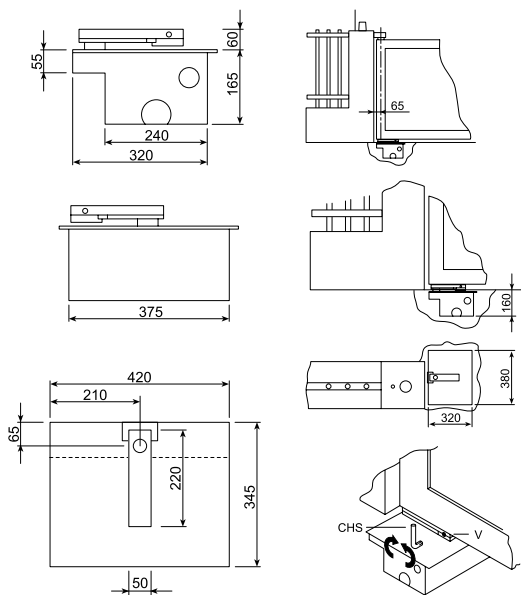
**Control 24 V
CB124**



**Box
SUB300B**



**Door arm
SUB-110°**



Optional accessories



SUB-180 – 180° Arm



SUB100S – Retrofit adapter arm



SUB-110 – 110° Arm

For more accessories please refer to the price book.

Technical Data

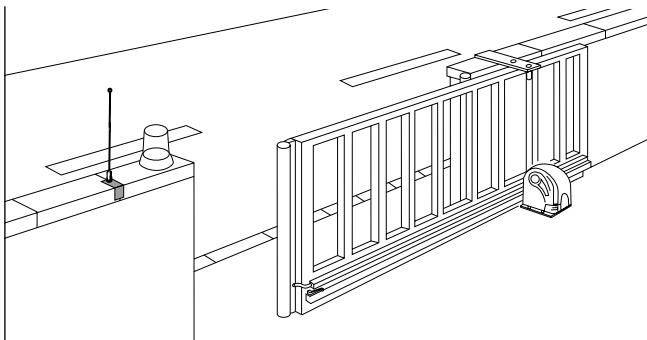
		SUB300	SUB324
Voltage IN	V AC	220-240	220-240
Frequency	Hz	50	50
Motor voltage	V	230 AC	24 DC
Power (nom.)	W	300	48
Current (max.)	A	2.1	2.0
Torque (max.)	Nm	380	380
Capacitor	µF	10	-
Thermal overload protection	°C	150	-
Motor speed	rpm	1,400	2,500
Duty cycle	cycles/h	~20	~40
Working temperature range	°C	-25/+55	-25/+55
Protection class		I	I
Degree of protection	IP	67	67
Motor weight (~)	kg	10	10

Model & carton content chart

Model	Drive unit	Capacitor	Electronic control	Remote control 94335E	Receiver & radio 801221	Foundation box*	Drive arm**	IR sensor 772E	Flashing light FLA1-LED	Key switch COM18010	Antenna kit ANT4X-1LM	Number of cartons
SUB300M	1 x	•										1
SUB324M	1 x											1
SUB300K	2 x	•	•	2 x	433 MHz	•	•	•	optional	optional	optional	8
SUB324K	2 x		•	2 x	433 MHz	•	•	•	optional	optional	optional	8

*SUB300B Zinc coated box included

**SUB-110 110° opening arm included



2-Year Full warranty
Install all equipment in
compliance with EN60335-2-103.
Type tested.

High quality accessories included in the carton

SLY250K | SLY300K | SLY324K | SLY500K | SLY524K | SLY500K-120 | SLY1000K | SLY1800K



**3-channel mini
remote control
94335E**



**Receiver
801221**



**IR Sensor
772E**

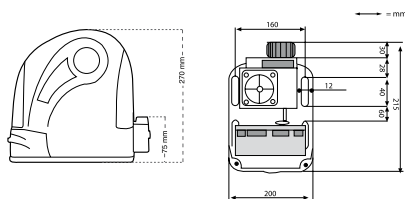


**Control 230 V
CB22**

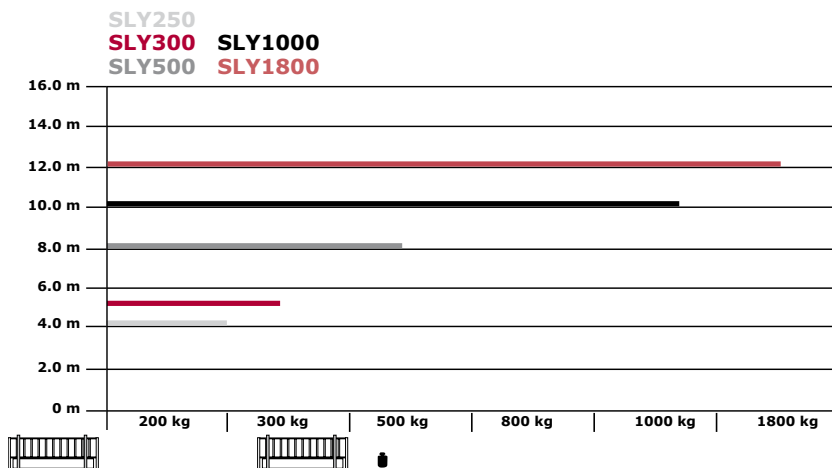
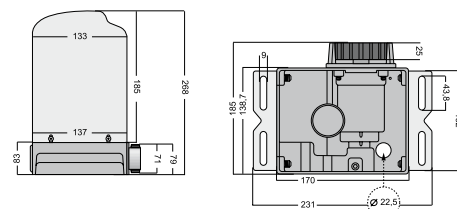


**Control 24 V
CB202**

SLY300/SLY500/SLY1000/SLY1800



SLY250



Optional accessories

- 320001 Rack, 1 m, steel
- 202097 Rack, 4 x 1 m Kit, steel
- 202127 Rack, 1 m, plastic
- 202134 Rack, 8 x 0,5 m, plastic
- 203261 RPM sensor

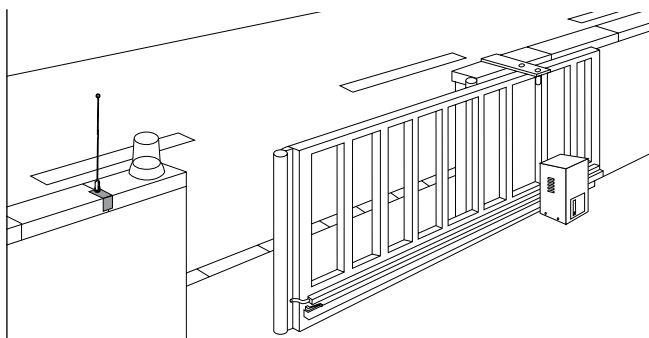
Technical Data

		SLY250	SLY300	SLY300-24	SLY500	SLY500-24	SLY500-120	SLY1000	SLY1800
Voltage IN	V AC	220-240	220-240	220-240	220-240	220-240	127	220-240	220-240
Frequency IN	Hz	50	50	50	50	50	60	50	50
Motor voltage	V	230 AC	230 AC	24 DC	230 AC	24 DC	127 AC	230 AC	230 AC
Power (nom.)	W	130	300	40	360	60	360	480	600
Current (max.)	A	1	1.3	1.8	1.5	2.5	2.8	2.1	2.6
Torque	Nm	6	10	8	14	12	14	20	34
Capacitor	µF	8	8	-	10	-	40	16	20
Thermal overload protection	°C	140	140	-	140	-	140	140	140
Motor speed	rpm	1,400	1,400	2,500	1,400	2,200	1,650	1,400	1,400
Travel speed (~)	m/min	12	10.5	14	10.5	12	12	10.5	8
Duty cycle (max.)	cycles/h	~20	~20	~50	~20	~50	20	~20	~20
Working temperature range	°C	-25 +55	-25 +55	-25 +55	-25 +55	-25 +55	-25 +55	-25 +55	-25 +55
Protection class		I	I	I	I	I	I	I	I
Degree of protection	IP	44	44	44	44	44	44	44	44
Product weight (~)	kg	7	8	8	8	8	8	9	10

For more accessories please refer to the price.

Model & carton content chart

Model	Drive unit with cover	Adjustable mounting plate	Capacitor	Trans-former	Magnetic limit switches	Electronic control	Remote control 94335E	Receiver & radio 801221	IR sensor 772E	Flashing light FLA1-LED	Key switch COM18010	Antenna kit ANT4X-1LM	Number of cartons
SLY250	1 x	•	•		•								1
SLY250K	1 x	•	•		•	•	2 x	433 MHz	•	optional	optional	optional	2
SLY300	1 x	•	•		•								1
SLY300-24	1 x	•											1
SLY300K	1 x	•							•	optional	optional	optional	3
SLY324K	1 x	•							•	optional	optional	optional	3
SLY500	1 x	•	•		•								1
SLY500-24	1 x	•		•	•								1
SLY500K	1 x	•	•		•	•	2 x	433 MHz	•	optional	optional	optional	3
SLY524K	1 x	•		•	•	•	2 x	433 MHz	•	optional	optional	optional	3
SLY500K-120	1 x	•	•		•	•	2 x	390 MHz	•	optional	optional	optional	3
SLY1000	1 x	•	•		•								1
SLY1000K	1 x	•	•		•	•	2 x	433 MHz	•	optional	optional	optional	3
SLY1800	1 x	•	•		•								1
SLY1800K	1 x	•	•		•	•	2 x	433 MHz	•	optional	optional	optional	3



2-Year Full warranty
Install all equipment in
compliance with EN60335-2-103.
Type tested.

High quality accessories included in the carton

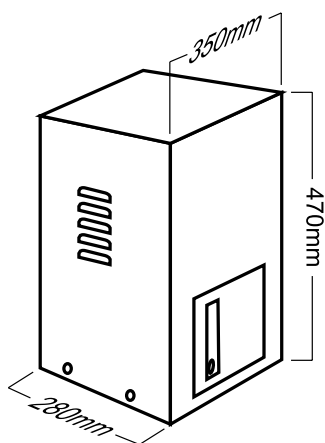
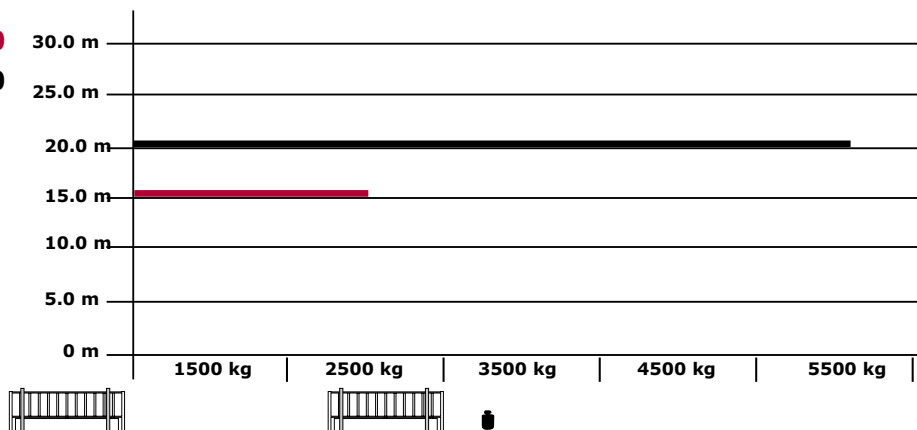


**Hold-to-run
electronic
SLY3500E1**



**Automatic
electronic
SLY2500E2
SLY3500E2**

SLY2500
SLY3500



Technical Data

		SLY2500	SLY3500
Voltage IN	V AC	220-240	400
Frequency IN	Hz	50	50
Motor voltage	V	230	400
Phase		1-P	3-P
Power (nom.)	W	550	750
Current (max.)	A	3.85	1.97
Torque	N	120	215
Capacitor	µF	2 x 16	-
Thermal overload protection	°C	140	switch
Motor speed	rpm	1,500	1,500
Travel speed (~)	m/min	10	10
Duty cycle (max.)	cycles/h	~25	~60
Working temperature range	°C	-25/+55	-25/+55
Protection class		I	I
Degree of protection	IP	55	55
Product weight (~)	kg	41	41
Max. gate wing length by 250 kg (~)	m	15	20
Max. gate weight at max. wing length (incl. 20% reserve)	kg	2,500	5,500

Optional accessories



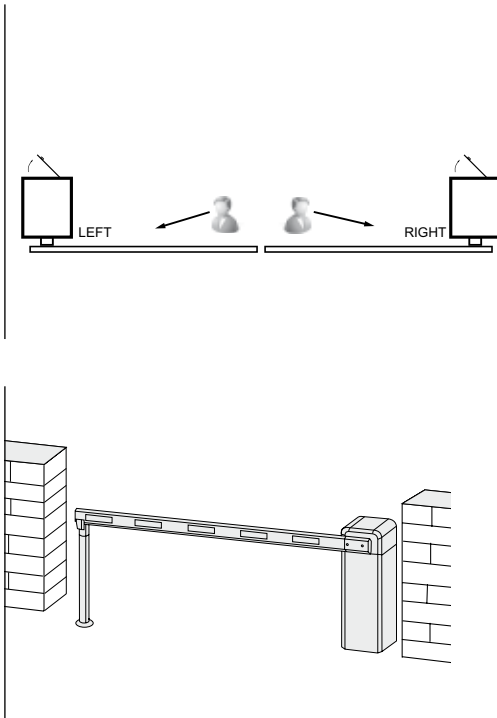
320001 Rack, 1 m, steel
202097 Rack, 4 x 1 m kit, steel

For more accessories please refer to the price book.

Model & carton content chart

Model	Drive unit with cover	Release mechanism	Capacitor	2x limit switches	Electronic hold-to-run	Electronic automatic	Receiver & radio 801221	IR sensor 772E	Flashing light FLA1-LED	Key switch COM18010	Antenna kit ANT4X-1LM	Number of cartons
SLY2500	1 x	•	•	•								1
SLY2500E2	1 x	•	•	•		•	optional	optional	optional			2
SLY3500	1 x	•		•								1
SLY3500E1	1 x	•		•	•							2
SLY3500E2	1 x	•		•		•	optional	optional	optional			2

SCHRANKEN



**2-Year
Full warranty**
Install all equipment
in compliance with
EN60335-2-103.

High quality accessories



**Boom octagonal
3.000 mm – 8.000 mm
BARS1
BARS3
BARM6**



**Pendulum support
BAR-H1**



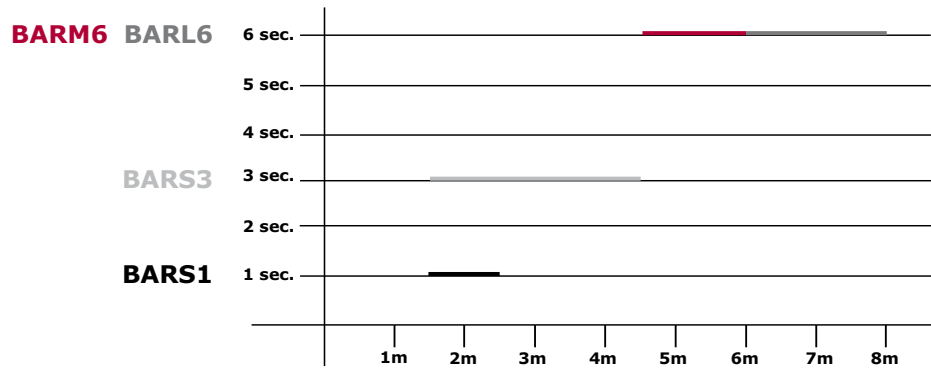
**Boom 90°
BAR-B90**



**Boom holder
BAR-H2**



**Boom 180°
BAR-B180**



Technical Data

	BARS1	BARS3	BARM6	BARL6
Opening time (sec.)	1	3	6	6
Closing time (sec.)	1	3	6	6
Max. length* straight boom (mm)	2,500	4,500	6,000	8,000
Max. length* 90° folding boom (mm)	-	3,200	-	-
Max. length* 180° folding boom (mm)	-	3,020	-	-
Duty rating (%)	100	100	100	100
Max. cycles per day	900	400	200	200
Warranty (years)	2	2	2	2
Voltage IN (V)	220-240	220-240	220-240	220-240
Frequency (Hz)	50	50	50	50
Consumption nominal (A)	1	1	1	1
Power (W)	100	120	120	120
Motor voltage (V)	230	230	230	230
Motor speed (rpm)	933	933	933	933
Capacitor (µF)	9+9	9+9	9+9	9+9
Rating of housing (IP)	45	45	45	45
Rating control board box (IP)	56	56	56	56
Temperature range (°C)	-25/+75	-25/+75	-25/+75	-25/+75
Cooling fan for motor	-	yes	yes	yes
Overheat protection motor (°C)	140	140	140	140
HOUSING				
Width door side (mm)	325	325	325	325
Depth (mm)	282	282	282	282
Height (mm)	930	930	930	930
Pivot point / Bar height (mm)	830	830	830	830
Housing color standard	RAL 2003	RAL 2003	RAL 2003	RAL 2003
Weight in transport box (kg)	60	60	60	60

Accessories

	BAR-BM3*	BAR-BM4*	BAR-BM6*	BAR-BM8*	BAR-B90*	BAR-B180*	BAR-H1	BAR-H2
	Boom	Boom	Boom	Boom	90° Boom	180° Boom	Pendulum supp.	Boom holder
Delivery size (mm)	3,000	4,500	6,000	8,000	3,200	3,000	•	•
Profile type	octagonal	octagonal	octagonal	octagonal	octagonal	octagonal	•	•
Height x Width (mm)	100 x 45	100 x 45	100 x 45	100 x 45	100 x 45	100 x 45	830-870	770-810
Weight (kg/m)	0.9-1.05	0.9-1.05	0.9-1.05	0.9-1.05	0.9-1.06	0.9-1.07	~0.7	1.5
BARS1	•							
BARS3	•	•			•	•		
BARM6			•					•
BARL6				•				•

*Barrier boom length is not equal closing length of road. Delivered boom length can vary 20 mm.

Model & carton content chart

Model	Drive unit	Mountin bar 2x	Mounting bolt concrete	Service door	Electronic control	Limit switch optical	Release manual	Release key	Radio	Radio connector cable	Number of cartons
BARS1	•	•	4x	•	•	•	•	1 x	-	•	1
BARS3	•	•	4x	•	•	•	•	1 x	-	•	1
BARM6	•	•	4x	•	•	•	•	1 x	-	•	1
BARL6	•	•	4x	•	•	•	•	1 x	-	•	1

LiftMaster

Chamberlain GmbH
Alfred-Nobel-Straße 4
D-66793 Saarwellingen
www.liftmaster.eu

LiftMaster

Chamberlain GmbH
Alfred-Nobel-Straße 4
D-66793 Saarwellingen
www.liftmaster.eu