

BENINCA[®]

TECHNOLOGY TO OPEN



E N G L I S H C A T A L O G U E



Made in Italy



INDUSTRIAL USE					CONTROL UNITS
	VN.S sectional doors rolling doors	230 Vac		VN.S20	THINKY START CELL.P WAVE 230
				VN.S20UP	UP.VN*
				VN.S20ESW	THINKY WAVE 230
				VN.S40	THINKY START CELL.P WAVE 230
				VN.S40UP	UP.VN*
		400 Vac		VN.ST20	THINKY START
				VN.ST20ESW	THINKY
	VN.S industrial sliding doors and folding doors with more than 2 sections	230 Vac		VN.S40V	THINKY START CELL.P WAVE 230
	VN.M sectional doors rolling doors	230 Vac		VN.M20	THINKY START CELL.P WAVE 230
				VN.M20UP	UP.VN*
				VN.M20ESW	THINKY WAVE 230
				VN.M40	THINKY START CELL.P WAVE 230
				VN.M40UP	UP.VN*
				KVN.M20ESW	THINKY
		400 Vac		VN.MT20	THINKY START
				VN.MT20ESW	THINKY
				VN.MT40	THINKY START
	VN.M large sectional doors, rolling doors and unbalanced shutters	400 Vac intensive use		VN.MT40V	THINKY START
	ADAM folding door with max 2 wings	230 Vac		ADAM	BRAINY
		24 Vdc intensive use		ADAM24	BRAINY24 BRAINY24+

* Built-in control unit

230_{VAC}24_{VDC}

ZED ZED24

COUNTERWEIGHT GARAGE DOORS RESIDENTIAL/COMMERCIAL USE

new electronic control unit with incorporated receiver and encoder

up to 12.5 m²

DESIGNED TO COMPLY WITH EUROPEAN SAFETY STANDARDS

Electromechanical irreversible geared motor for tilt up doors with counterweights for residential use. Available in the 230 Vac and 24 Vdc versions with or without control unit. Built-in courtesy light, limit switch and control buttons.

230 Vac

- Irreversible 230 Vac electromechanical geared motor also available in the ZED.LRIE version for large doors
- The encoder device ensures crush prevention and precision in the door moving phases
- Quieter thanks to the new control unit with autotransformer created to reduce door vibrations to a minimum

24 Vdc | intensive use

- Irreversible 24 Vdc electromechanical geared motor for intensive use
- Optional battery powered operation
- Amperometric sensor obstacle detection system to prevent crushing



CONTROL UNITS:

ZED.RIE ——— CP.ZED-AUTR 157

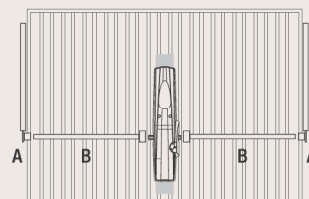
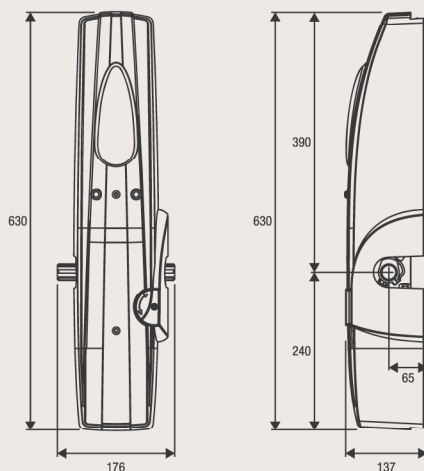
ZED.SC ——— LOGICA 138

ZED.LRIE ——— CP.ZED-AUTR 157

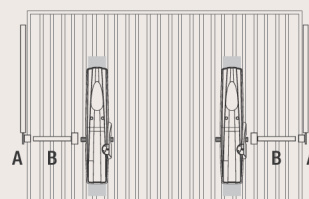
ZED.LSC ——— LOGICA 138

ZED24.RI ——— CP.ZED24 165

ZED24.SC ——— LOGICA24 146



Central Assembly	A	B
Without welding	AU2.DNS	AU.45Z / AU.45ZL
With welding	AU2.D / AU2.C	AU.45Z / AU.45ZL



Lateral Assembly	A	B
Without welding	AU2.D45 / AU2D.45 L	---
	AU2.DNS	AU2.45T
With welding	AU2.D / AU2.C	AU2.45T / AU.45B

**AU.125**

1,250 mm mounting plate.

**AU.20**

1,950 mm mounting plate.

**AU.65**

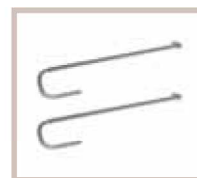
650 mm mounting plate.

**AU2.DNS**

Pair of straight arms with cylindrical bush Ø 30.5 mm to mount control unit without welding (L=600mm).

**AU2.D**

Pair of straight galvanised arms complete with accessories for fastening, without bush (L=600 mm).

**AU2.C**

Pair of curved galvanised arms complete with accessories for fastening, without bush.

**AU2.D45**

Pair of straight galvanised arms with grooved bush Ø 21.2 mm welded, complete with accessories for fastening (L=600 mm).

**AU2.D45L**

Pair of straight galvanised arms with grooved bush Ø 21.2 mm welded, complete with accessories for fastening (L=2000 mm).

**AU.45Z
AU.45ZL**

Pair of galvanised pipes with grooved bush Ø 21.2 mm L. 1,500 mm (AU.45Z) and L. 2,000 mm (AU.45ZL) complete with accessories (control unit assembly).

**AU2.45T**

Pair of galvanised pipes L. 150 with grooved bush Ø 21.2 mm welded, complete with accessories (lateral assembly).

**AU.45B**

Grooved bush Ø 21.2 mm with M6 fastener hole.

**ZED.20Q**

Grooved bush Ø 21.2mm with square profile 20x20mm. Designed with M6 fastener holes. L = 62 mm

**ZED.MS**

Wire manual unlock device.

**ZED.E**

External release unlock device (to be used on lateral mounting).

**ZED.SE**

Outdoor unlock device (for central mounting).

**MAG.E**

Magnetic sensor device to detect obstacles and manage deceleration.

**CABLE.24E**

Cable reel with 5 conductors (2 for motor, 3 for encoder) for connecting the encoder device in the 24 Vdc versions. L= 100 m.

**ID.TA**

Warning board.

TECHNICAL DATA	ZED.RIE	ZED.SC	ZED.LRIE	ZED.LSC	ZED24.RI	ZED24.SC
Power supply	230 Vac (50-60Hz)	230 Vac (50-60Hz)	230 Vac (50-60Hz)	230 Vac (50-60Hz)	230 Vac (50-60Hz)	230 Vac (50-60Hz)
Motor supply	230 Vac	230 Vac	230 Vac	230 Vac	24 Vdc	24 Vdc
Max absorbed current	1.5 A	1.5 A	1.4 A	1.4 A	1 A	8 A
Torque	350 Nm	350 Nm	330 Nm	330 Nm	260 Nm	260 Nm
Opening time	14"	14"	22"	22"	10"/15"	10"/15"
Duty cycle	30%	30%	30%	30%	intensive use	intensive use
Protection level	IP40	IP40	IP40	IP40	IP40	IP40
Built-in control unit	YES	NO	YES	NO	YES	NO
Built-in receiver	YES	NO	YES	NO	YES	NO
Encoder	YES	NO	YES	NO	NO	NO
Operating temperature	-20°C /+50°C	-20°C /+50°C	-20°C /+50°C	-20°C /+50°C	-20°C /+50°C	-20°C /+50°C
Max door surface	11 m²/max	11 m²/max	12.5 m²/max	12.5 m²/max	10 m²/max	10 m²/max
Weight	10 kg	9.3 kg	9.9 kg	9.2 kg	10.2 kg	7.9 kg
Items no. per pallet	50	50	50	50	50	50



JIM

SECTIONAL GARAGE DOORS RESIDENTIAL/COMMERCIAL USE

control unit with built-in encoder and receiver
belt or chain driven
1 TO.GO2VA transmitter included

up to 22 m²



CONTROL UNITS:

JM.3	CP.J3M	166
JM.3ESA	CP.J4ESA	167
JM.4ESA	CP.J4ESA	167

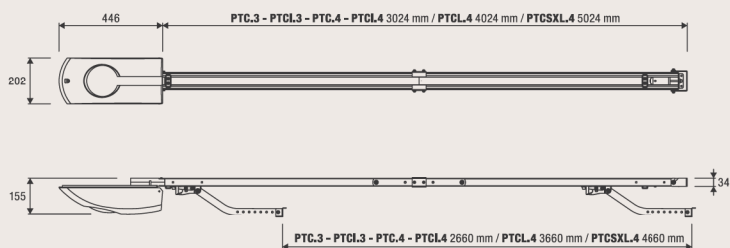


24 Vdc | intensive use

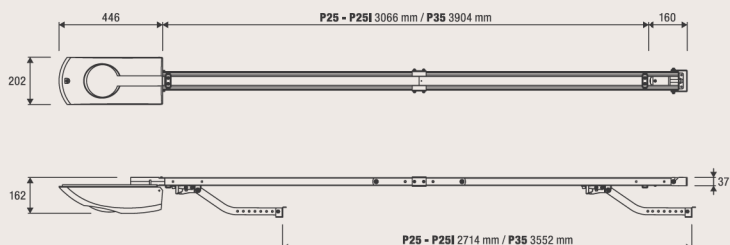
- 24 VDC irreversible geared motor for intensive use
- Adjustable stroke with one mechanical stop included in the belt rails and two in the chain rails
- Anti-crushing system with amperometric obstacle detection
- Operation guaranteed even in the event of a power supply failure through batteries that integrate perfectly into the motor
- Evolved electronics with display and energy saving courtesy light in the versions JM.3/4ESA
- The encoder guarantees maximum safety and precision while the gate is moving
- Quick hooking system for connecting the arm to the door plate

Rail not included

□ WITH BELT RAIL



□ WITH CHAIN RAIL



	RAIL	JM.3	JM.3ESA	JM.4ESA
BELT	PTC.3	✓	✓	×
	PTC.4	✓	✓	✓
	PTCL.3	✓	✓	×
	PTCL.4	✓	✓	✓
	PTCL.4	✓	✓	✓
	PTCSXL.4	✓	✓	✓

	RAIL	JM.3	JM.3ESA	JM.4ESA
CHAIN	P25	✓	✓	✓
	P25I	✓	✓	✓
	P35	✓	✓	✓

✓ Compatible

× Not Compatible

**PTC.3**

Pre-assembled and pre-tightened rail with belt for doors up to H 2.5 m.
[two pieces 1.5 m each]

**PTCI.3**

Pre-assembled and pre-tightened rail with belt for doors up to H 2.5 m.
[whole piece 3 m long]

**PTC.4**

Pre-assembled and pre-tightened rail with belt for doors up to H 2.5 m.
[two pieces 1.5 m each]

**PTCL.4**

Pre-assembled and pre-tightened rail with belt for doors up to H 3.5 m.
[two pieces 2 m each]

**PTCI.4**

Pre-assembled and pre-tightened rail with belt for doors up to H 2.5 m.
[whole piece 3 m long]

**PTCSXL.4**

Non-assembled rail with belt for doors up to 4.5 m in height.
[5 parts of 1 m each]

**PTC.AR**

Bracket for fast ceiling attachment of JIM belt models (PTC).
[5 pcs pack]

**PTC.STOP**

Mechanical stop for belt guide (PTCI.3/PTC.3/PTC.4/PTCL.4/PTCI.4/PTCSXL.4).
[5 pcs pack]

**P25**

Pre-assembled rail with chain, for doors of max H 2.5 m.
[two pieces 1.4 m each]

**P25I**

Fully pre-assembled and pre-tensioned rail with chain, for doors of max H 2.5 m.
[whole piece 2.8 m long]

**P35**

Pre-assembled rail with chain, for doors of max H 3.5 m.
[two pieces 1.8 m each]

**AU.C25**

Swinging arm for tilt up doors. One mechanical stop for belt guide included.

**JK.UL**

Outside key lock for sectional gates.

**SB.PULS**

Key unlocking device with handle for sectional and tilt up doors.

**ZED.MS**

Wire manual unlock device.

**ID.TA**

Warning board.

**JM.CBY**

Accessory with CBY.24V battery charger, 1.2 Ah batteries and support bracket.

TECHNICAL DATA	JM.3*	JM.3ESA	JM.4ESA*
Power supply	230 Vac (50-60Hz)	230 Vac (50-60Hz)	230 Vac (50-60Hz)
Motor supply	24 Vdc	24 Vdc	24 Vdc
Max absorbed current	0.7 A	0.7 A	1.5 A
Power consumption in stand-by	60 mA	8 mA	8 mA
Thrust	600 N	600 N	1200 N
Opening speed	8.9 m/min	8.9 m/min	8.9 m/min
Duty cycle	intensive use	intensive use	intensive use
Protection level	IP 40	IP 40	IP 40
Operating temperature	-20°C /+50°C	-20°C /+50°C	-20°C /+50°C
Max door surface	11 m ² /max	11 m ² /max	22 m ² /max
Limit switch	electronic with encoder	electronic with encoder	electronic with encoder
Weight	4.6 kg	4.8 kg	6.6 kg
Items no. per pallet	50	50	50

* Available in 115 VAC version



JIM TURBO

SECTIONAL GARAGE DOORS RESIDENTIAL/COMMERCIAL USE

control unit with built-in encoder and receiver
belt driven
1 TO.GO2VA transmitter included

up to 11 m²



CONTROL UNITS:

JM.3ESA TURBO — CP.JT

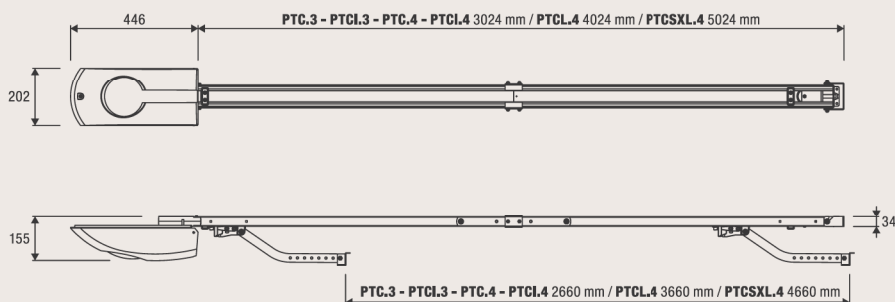
168



24 Vdc | intensive use

- 24 VDC fast geared motor for intensive use with incorporated control unit and receiver
- The encoder guarantees maximum safety and precision while the gate is moving
- STC system device enables torque management in relation to the position of the gate, which guarantees maximum safety
- **Maximum performance and speed (15.5 m/min)**
- Opening speed can be set independently from the closing speed
- Integrated energy saving LED courtesy light
- Operation guaranteed even in the event of a power supply failure through batteries that integrate perfectly into the motor
- Anti-crushing system with amperometric obstacle detection
- Stroke is adjustable with 2 mechanical stops provided
- Quick hooking system for connecting the arm to the door plate

Rail not included



**PTC.3**

Pre-assembled and pre-tightened rail with belt for doors up to H 2.5 m.
[two pieces 1.5 m each]

**PTCI.3**

Pre-assembled and pre-tightened rail with belt for doors up to H 2.5 m.
[whole piece 3 m long]

**PTC.4**

Pre-assembled and pre-tightened rail with belt for doors up to H 2.5 m.
[two pieces 1.5 m each]

**PTCL.4**

Pre-assembled and pre-tightened rail with belt for doors up to H 3.5 m.
[two pieces 2 m each]

**PTCI.4**

Pre-assembled and pre-tightened rail with belt for doors up to H 2.5 m.
[whole piece 3 m long]

**PTCSXL.4**

Non-assembled rail with belt for doors up to 4.5 m in height.
[5 parts of 1 m each]

**PTC.AR**

Bracket for fast ceiling attachment of JIM belt models (PTC).
[5 pcs pack]

**AU.C25**

Swinging arm for tilt up doors. One mechanical stop for belt guide included.

**JK.UL**

Outside key lock for sectional gates.

**SB.PULS**

Key unlocking device with handle for sectional and tilt up doors.

**ZED.MS**

Wire manual unlock device.

**ID.TA**

Warning board.

**JM.CBY**

Accessory with CBY.24V battery charger, 1.2 Ah batteries and support bracket.

TECHNICAL DATA	JM.3ESA TURBO
Power supply	230 Vac (50-60Hz)
Motor supply	24 Vdc
Max absorbed current	0.7 A
Power consumption in stand-by	8 mA
Thrust	600 N
Opening speed	8.9÷15.5 m/min
Duty cycle	intensive use
Protection level	IP 40
Operating temperature	-20°C /+50°C
Max door surface	11 m ² /max
Limit switch	electronic with encoder
Weight	5.8 kg
Items no. per pallet	50

230_{VAC}400_{VAC}

VN.S/M

VN.ST/MT

SECTIONAL DOORS AND ROLLING DOORS INDUSTRIAL USE

new plastic box

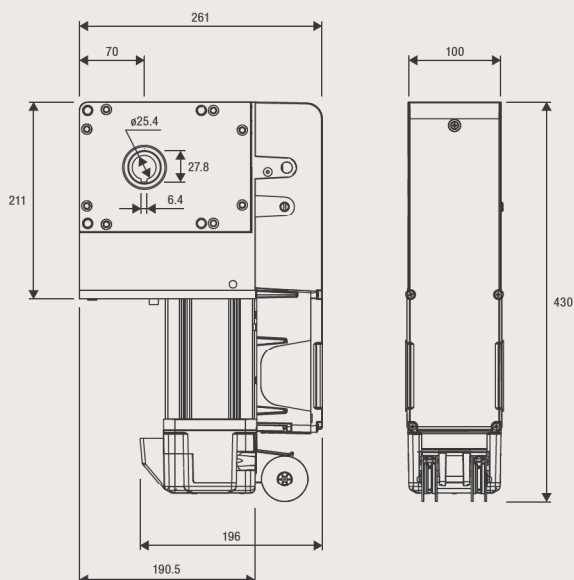
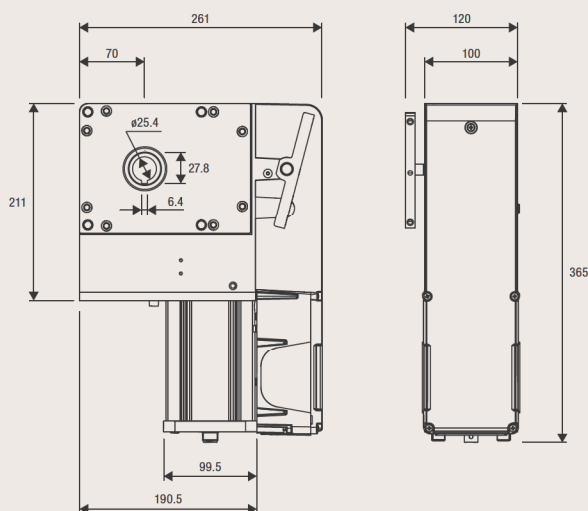
up to 40 m²

CONTROL UNITS:

VN.S20 VN.M20		THINKY	141
		START	142
		CELL.P	139
		WAVE230	140
VN.S40 VN.M40		THINKY	141
		START	142
		CELL.P	139
		WAVE230	140
VN.ST20 VN.MT20 VN.MT40		THINKY	141
		START	142

230 Vac | 400 Vac

- Irreversible electromechanical gear motor with quick release or manual chain operated movement available in the single and three-phase versions with 1/20 and 1/40 reduction rates
- New plastic box that makes wiring the motor easier, thanks to the position of the front clip connector and the possibility of reaching three different positions with the wiring.
- Two accessories are available for chain drives with reduction rates 1:1 (off-axis motor installation) or 1:1.8 (torque or speed multipliers)
- Easy and precise adjustment of limit switch position
- Maximum safety guaranteed during rapid release phases, thanks to a micro-switch that cuts the power supply to the motor
- Oil lubricated reductions with hardened steel screw and bronze gears guarantee high performance, maximum reliability and silent operation
- 4 micrometrically adjustable limit switches



**VN.A30**

Shaft adapter
Ø 30 mm.

**VN.A3175**

Shaft adapter
Ø 31.75 mm.

**VN.A40**

Shaft adapter
Ø 40 mm.

**VN.RV**

Transmission set
1:1.8 for 1" shaft
(25.4 mm) composed
of two gears with
external diameter
78 mm and 138.4 mm
and chain L = 1 m.

**VN.RM**

Transmission set 1:1
for 1" shaft (25.4 mm)
composed of two gears
with external diameter
78 mm and chain L = 1 m.

**VN.CTA**

Chain extension.

**VN.M4**

M4 pinion for use
with rack in horizontal
sliding door configuration.

**RI.M4ZF**

Galvanised slotted M4
rack 22x22x2010 mm
for fastening to the
side with the teeth.
Supplied with M6 screws.
Package of 1 pc.

**IPB.NO**

Industrial keypad
fitted with 2 contacts
that are normally open.

**IPB.NC**

Industrial keypad
fitted with a contact
that is normally open
and a contact
normally closed.

**RF.SUN**

Battery-operated device
recharged by means
of a photovoltaic panel
applied on a mobile edge.

**RF**

Device with a non
rechargeable battery,
with guaranteed
duration 2 years.

**SC.RF**

Device powered at
12/24 Vdc with self-test
function and 2 outputs
for connection to the
electronic control units.

Wire unlock device	VN.S20	VN.S40	VN.ST20	---
Manual override	VN.M20	VN.M40	VN.MT20	VN.MT40
Power supply	230 Vac (50-60Hz)	230 Vac (50-60Hz)	≈ 400 Vac (50-60Hz)	≈ 400 Vac (50-60Hz)
Motor supply	230 Vac	230 Vac	≈ 400 Vac	≈ 400 Vac
Max absorbed current	3.3 A	3.3 A	1.7 A	1.7 A
Max torque	130 Nm	130 Nm	180 Nm	180 Nm
Maximum output rotations	18	38	18	38
Output speed	24 r.p.m.	24 r.p.m.	24 r.p.m.	24 r.p.m.
Shaft hole	1" (25.4 mm)	1" (25.4 mm)	1" (25.4 mm)	1" (25.4 mm)
Limit switch red. rate	1/20	1/40	1/20	1/40
Duty cycle	30%	30%	50%	50%
Protection level	IP40	IP40	IP40	IP40
Operating temperature	-20°C /+50°C	-20°C /+50°C	-20°C /+50°C	-20°C /+50°C
Lubrication	OIL	OIL	OIL	OIL
Max door surface	35 m²/max	35 m²/max	40 m²/max	40 m²/max
Weight	15.1 kg (VN.S20) 15.3 kg (VN.M20)	15.2 kg (VN.S40) 15.3 kg (VN.M40)	14.8 kg (VN.ST20) 15.1 kg (VN.MT20)	15 kg
Items no. per pallet	32 (VN.S20) 24 (VN.M20)	32 (VN.S40) 24 (VN.M40)	32 (VN.ST20) 24 (VN.MT20)	24



VN.S UP

VN.M UP

SECTIONAL DOORS AND ROLLING DOORS INDUSTRIAL USE

new plastic box
built-in control unit

up to 35 m²

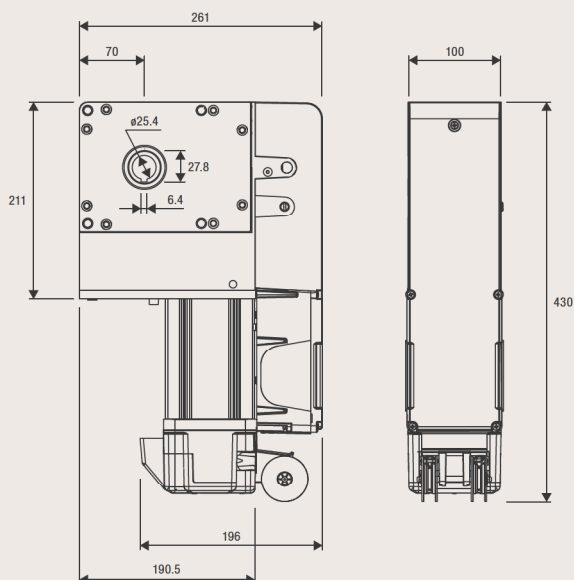
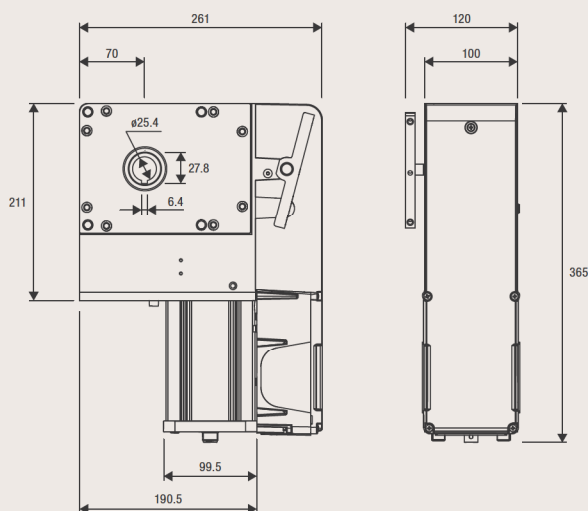


CONTROL UNITS:

VN.S20 UP	UP.VN	158
VN.S40 UP	UP.VN	158
VN.M20 UP	UP.VN	158
VN.M40 UP	UP.VN	158

230 Vac

- Irreversible single phase electromechanical geared motor with quick release or manual chain movement available with 1/20 or 1/40 reduction rates
- New plastic box that makes wiring the motor easier, thanks to the position of the front clip connector and the possibility of reaching three different positions with the wiring
- Fitted with integrated deadman's control unit (UP.VN), fitted with very low voltage 12 VDC safety controls. Ideal for simple installations
- Two accessories are available for chain drives with reduction rates 1:1 (off-axis motor installation) or 1:1.8 (torque or speed multipliers)
- Maximum safety guaranteed during rapid release phases, thanks to a micro-switch that cuts the power supply to the motor
- Oil lubricated reductions with hardened steel screw and bronze gears guarantee high performance, maximum reliability and silent operation
- 4 micrometrically adjustable limit switches



**VN.A30**

Shaft adapter
Ø 30 mm.

**VN.A3175**

Shaft adapter
Ø 31.75 mm.

**VN.A40**

Shaft adapter
Ø 40 mm.

**VN.RV**

Transmission set
1:1.8 for 1" shaft
(25.4 mm) composed
of two gears with
external diameter
78 mm and 138.4 mm
and chain L = 1 m.

**VN.RM**

Transmission set 1:1
for 1" shaft (25.4 mm)
composed of two gears
with external diameter
78 mm and chain L = 1 m.

**VN.CTA**

Chain extension.

**VN.M4**

M4 pinion for use
with rack in horizontal
sliding door configuration.

**RI.M4ZF**

Galvanised slotted M4
rack 22x22x2010 mm
for fastening to the
side with the teeth.
Supplied with M6 screws.
Package of 1 pc.

**IPB.NO**

Industrial keypad
fitted with 2 contacts
that are normally open.

**IPB.NC**

Industrial keypad
fitted with a contact
that is normally open
and a contact
normally closed.

**RF.SUN**

Battery-operated device
recharged by means
of a photovoltaic panel
applied on a mobile edge.

**RF**

Device with a non
rechargeable battery,
with guaranteed
duration 2 years.

**SC.RF**

Device powered at
12/24 Vdc with self-test
function and 2 outputs
for connection to the
electronic control units.

TECHNICAL DATA	VN.S20 UP	VN.S40 UP	VN.M20 UP	VN.M40 UP
Power supply	230 Vac (50-60Hz)	230 Vac (50-60Hz)	230 Vac (50-60Hz)	230 Vac (50-60Hz)
Motor supply	230 Vac	230 Vac	230 Vac	230 Vac
Max absorbed current	3.3 A	3.3 A	3.3 A	3.3 A
Max torque	130 Nm	130 Nm	130 Nm	130 Nm
Maximum output rotations	18	38	18	38
Output speed	24 r.p.m.	24 r.p.m.	24 r.p.m.	24 r.p.m.
Shaft hole	1" (25.4 mm)	1" (25.4 mm)	1" (25.4 mm)	1" (25.4 mm)
Limit switch red. rate	1/20	1/40	1/20	1/40
Duty cycle	30%	30%	30%	30%
Protection level	IP40	IP40	IP40	IP40
Operating temperature	-20°C /+50°C	-20°C /+50°C	-20°C /+50°C	-20°C /+50°C
Lubrication	OIL	OIL	OIL	OIL
Max door surface	35 m²/max	35 m²/max	35 m²/max	35 m²/max
Weight	15.4 kg	15.4 kg	15.6 kg	15.6 kg
Items no. per pallet	32	32	24	24



VN.S/M ESW

VN.ST/MT ESW

SECTIONAL DOORS AND ROLLING DOORS INDUSTRIAL USE

new plastic box
quick plug-in connection
equipped with absolute encoder

up to 40 m²

230 Vac | 400 Vac

- Irreversible electromechanical gear motor with quick release or manual override, available in the single phase 230 VAC and three phase 400 VAC versions with 1/20 reduction ratios
- New plastic box that makes wiring the motor easier, thanks to the position of the front clip connector and the possibility of reaching three different positions with the wiring
- Equipped with absolute encoder that permits the regulation of the positions of the opening and closing limit switches on the door directly from the control unit
- Quick plug-in connection for quick and easy installation
- Two accessories are available for chain drives with gear speed reduction rates 1:1 (off-axis motor installation) or 1:1.8 (torque or speed multipliers)
- Maximum safety guaranteed during rapid release phases, thanks to a micro-switch that cuts the power supply to the motor
- Oil lubricated reductions with hardened steel screw and bronze gears guarantee high performance, maximum reliability and silent operation
- The single phase model (VN.M20ESW) is also available in kit version with motor, 5 m cable and THINKY control unit



CONTROL UNITS:

VN.S20 ESW	THINKY WAVE 230	141
VN.ST20 ESW	THINKY	141
VN.M20 ESW	THINKY WAVE 230	141
VN.MT20 ESW	THINKY	141



COMPLETE KIT



MOTOR

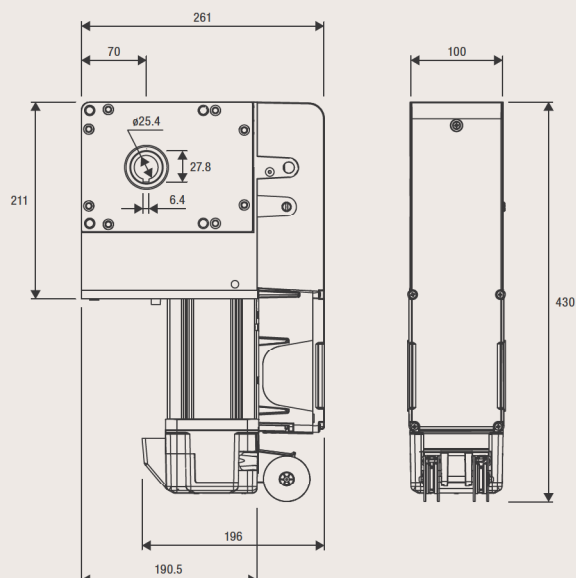
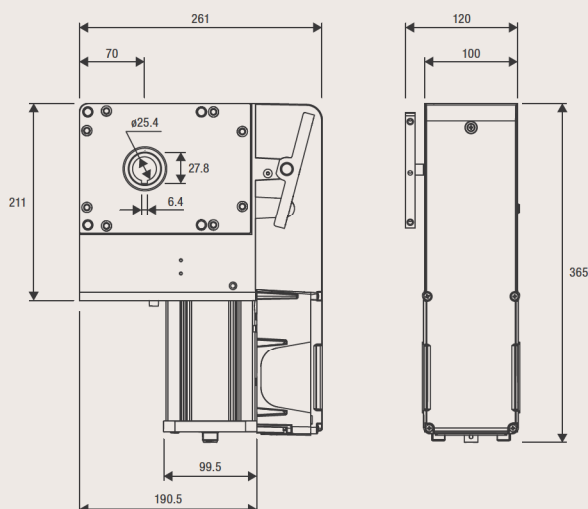


CONTROL U.



CABLE

KVN.M20ESW	1x VN.M20ESW	1x THINKY	1x CABLE VN.ESW 5
-------------------	---------------------	------------------	--------------------------



**VN.A30**

Shaft adapter
Ø 30 mm.

**VN.A3175**

Shaft adapter
Ø 31.75 mm.

**VN.A40**

Shaft adapter
Ø 40 mm.

**VN.RV**

Transmission set
1:1.8 for 1" shaft
(25.4 mm) composed
of two gears with
external diameter
78 mm and 138.4 mm
and chain L = 1 m.

**VN.RM**

Transmission set 1:1
for 1" shaft (25.4 mm)
composed of two gears
with external diameter
78 mm and chain L = 1 m.

**VN.CTA**

Chain extension.

**VN.M4**

M4 pinion for use
with rack in horizontal
sliding door configuration.

**RI.M4ZF**

Galvanised slotted M4
rack 22x22x2010 mm
for fastening to the
side with the teeth.
Supplied with M6 screws.
Package of 1 pc.

**CABLE VN.ESW 5**

Cable with quick plug-in
connection. L = 5 m.

**CABLE VN.ESW 8**

Cable with quick plug-in
connection. L = 8 m.

**CABLE VN.ESW 11**

Cable with quick plug-in
connection. L = 11 m.

**IPB.NO**

Industrial keypad
fitted with 2 contacts
that are normally open.

**IPB.NC**

Industrial keypad
fitted with a contact
that is normally open
and a contact
normally closed.

**RF.SUN**

Battery-operated device
recharged by means
of a photovoltaic panel
applied on a mobile edge.

**RF**

Device with a non
rechargeable battery,
with guaranteed
duration 2 years.

**SC.RF**

Device powered at
12/24 Vdc with self-test
function and 2 outputs
for connection to the
electronic control units.

TECHNICAL DATA	VN.S20 ESW	VN.ST20 ESW	VN.M20 ESW	VN.MT20 ESW
Power supply	230 Vac (50-60Hz)	≈ 400 Vac (50-60Hz)	230 Vac (50-60Hz)	≈ 400 Vac (50-60Hz)
Motor supply	230 Vac	≈ 400 Vac	230 Vac	≈ 400 Vac
Max absorbed current	3.3 A	1.7 A	3.3 A	1.7 A
Max torque	130 Nm	180 Nm	130 Nm	180 Nm
Maximum output rotations	18	18	18	18
Output speed	24 r.p.m.	24 r.p.m.	24 r.p.m.	24 r.p.m.
Shaft hole	1" (25.4 mm)	1" (25.4 mm)	1" (25.4 mm)	1" (25.4 mm)
Limit switch red. rate	1/20	1/20	1/20	1/20
Duty cycle	30%	50%	30%	50%
Protection level	IP40	IP40	IP40	IP40
Operating temperature	-20°C /+50°C	-20°C /+50°C	-20°C /+50°C	-20°C /+50°C
Lubrication	OIL	OIL	OIL	OIL
Max door surface	35 m²/max	40 m²/max	35 m²/max	40 m²/max
Weight	15.2 kg	15.2 kg	15.5 kg	15.5 kg
Items no. per pallet	32	32	24	24



VN.MT40V

LARGE SECTIONAL DOORS, ROLLING DOORS AND UNBALANCED SHUTTERS INDUSTRIAL USE

manual chain override
quick release



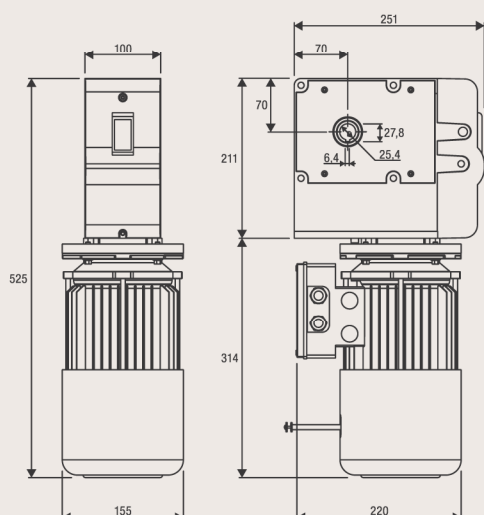
CONTROL UNITS:

VN.MT40V

THINKY
START141
142

400 Vac

- Irreversible electromechanical geared motor with manual chain movement and emergency release
- Ventilated electric motor ideal for intensive use and equipped with electric brake
- Two accessories are available for chain drives with reduction rates 1:1 (offset installation of motor) or 1:1.8 (torque or speed multiplier)
- Maximum safety guaranteed during rapid release phases, thanks to a micro-switch that cuts the power supply to the motor
- Oil lubricated reductions with hardened steel screw and bronze gears guarantee high performance, maximum reliability and silent operation
- 4 micrometrically adjustable limit switches



**VN.A30**

Shaft adapter
Ø 30 mm.

**VN.A3175**

Shaft adapter
Ø 31.75 mm.

**VN.A40**

Shaft adapter
Ø 40 mm.

**VN.RV**

Transmission set
1:1.8 for 1" shaft
(25.4 mm) composed
of two gears with
external diameter
78 mm and 138.4 mm
and chain L = 1 m.

**VN.RM**

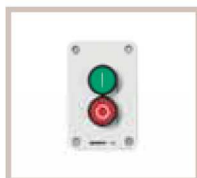
Transmission set 1:1
for 1" shaft (25.4 mm)
composed of two gears
with external diameter
78 mm and chain L = 1 m.

**VN.CTA**

Chain extension.

**IPB.NO**

Industrial keypad
fitted with 2 contacts
that are normally open.

**IPB.NC**

Industrial keypad
fitted with a contact
that is normally open
and a contact
normally closed.

**RF.SUN**

Battery-operated device
recharged by means
of a photovoltaic panel
applied on a mobile edge.

**RF**

Device with a non
rechargeable battery,
with guaranteed
duration 2 years.

**SC.RF**

Device powered at
12/24 Vdc with self-test
function and 2 outputs
for connection to the
electronic control units.

TECHNICAL DATA	VN.MT40V
Power supply	≈ 400 Vac (50-60Hz)
Motor supply	≈ 400 Vac
Max absorbed current	2.2 A
Max torque	340 Nm
Maximum output rotations	38
Output speed	24 r.p.m.
Shaft hole	1" (25.4 mm)
Limit switch red. rate	1/40
Duty cycle	intensive use
Protection level	IP40
Operating temperature	-20°C /+50°C
Lubrication	OIL
Weight	22.9 kg
Items no. per pallet	16

230_{VAC}

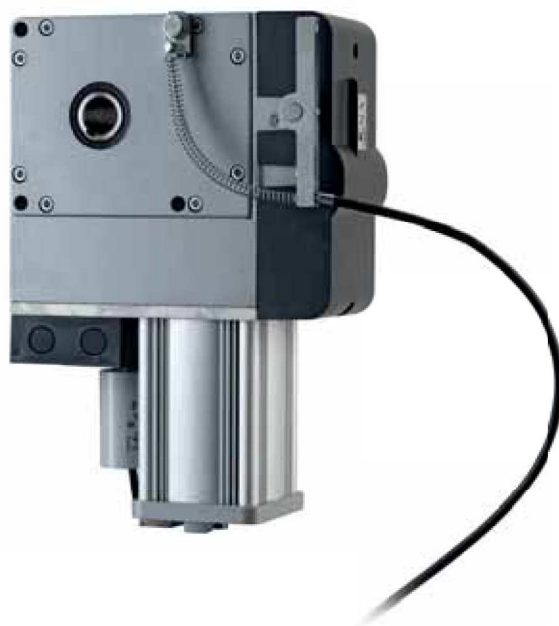
VN.S40V

**CONTROL UNITS:**

VN.S40V

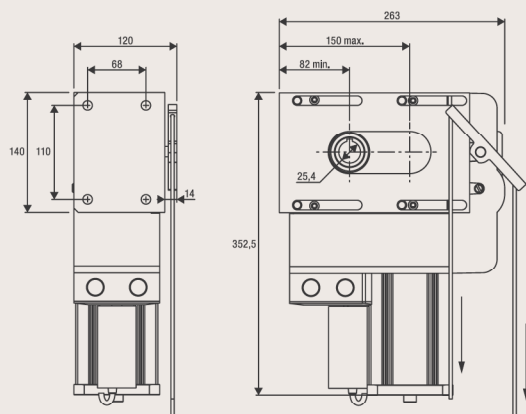
THINKY
START
CELL.P141
142
139**INDUSTRIAL SLIDING DOORS
AND FOLDING DOORS WITH MORE THAN 2 SECTIONS
INDUSTRIAL USE**

incorporated wire unlock device and handle



230 Vac

- Irreversible electromechanical geared motor
- Maximum safety guaranteed during rapid release phases, thanks to a micro-switch that cuts the power supply to the motor
- Oil lubricated reductions with hardened steel screw and bronze gears guarantee high performance, maximum reliability and silent operation
- 4 micrometrically adjustable limit switches



**VN.CT**

1/2" chain. Packing 5m.

**VN.GT**

Joint for chain VN.CT.

**VN.T**

Chain tightener.

**VN.S**

Door fitting brackets for VN.T.

**IPB.NO**

Industrial keypad fitted with 2 contacts that are normally open.

**IPB.NC**

Industrial keypad fitted with a contact that is normally open and a contact normally closed.

**RF.SUN**

Battery-operated device recharged by means of a photovoltaic panel applied on a mobile edge.

**RF**

Device with a non rechargeable battery, with guaranteed duration 2 years.

**SC.RF**

Device powered at 12/24 Vdc with self-test function and 2 outputs for connection to the electronic control units.

TECHNICAL DATA	VN.S40V
Power supply	230 Vac (50-60Hz)
Motor supply	230 Vac
Max absorbed current	1.5 A
Max torque	135 Nm
Maximum output rotations	38
Output speed	48 r.p.m.
Shaft hole	1" (25.4 mm)
Limit switch red. rate	1/40
Duty cycle	40%
Protection level	IP40
Operating temperature	-20°C /+50°C
Lubrication	OIL
Leaf max weight	800 kg
Weight	15.3 kg
Items no. per pallet	32

230_{VAC}24_{VDC}

ADAM

ADAM24

**CONTROL UNITS:**

ADAM	BRAINY	134
ADAM24	BRAINY24+	143
	BRAINY24	144

FOLDING DOOR WITH MAX 2 WINGS INDUSTRIAL USE

with built-in encoder device

up to 120 kg

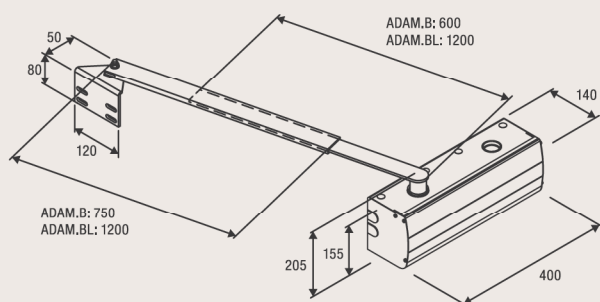
Irreversible electromechanical geared motor available in 230 Vac or 24 Vdc with encoder. Simple and quick to install, equipped with wire quick release. Accessory for LED courtesy lights available.

230 Vac

- Irreversible 230 Vac geared motor
- The encoder device ensures maximum safety and precision in the door moving phases
- Internal metal gears ensure maximum performance and durability over time

24 Vdc | intensive use

- Irreversible 24 Vdc geared motor for intensive use
- The encoder device ensures maximum safety and precision in the door moving phases
- Amperometric sensor obstacle detection system to prevent crushing
- Internal metal gears ensure maximum performance and durability over time

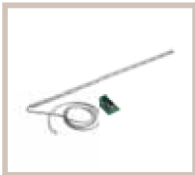




ADAM.B
Galvanized telescopic arm with welded bush, complete with fixing accessories (L=600 mm).



ADAM.BL
Galvanized telescopic arm with welded bush, complete with fixing accessories (L=1200 mm).



ADAM.LED
Accessory for LED courtesy lights.



VN.MS
Accessory for unlock device with handle.



FC.ADAM
Limit switch kit.



ID.TA
Warning board.

TECHNICAL DATA	ADAM	ADAM.24*
Power supply	230 Vac (50-60Hz)	230 Vac (50-60Hz)
Motor supply	230 Vac	24 Vdc
Max absorbed current	1.75 A	8 A
Torque	350 Nm	200 Nm
Duty cycle	30%	intensive use
Protection level	IP44	IP44
Operating temperature	-20°C /+50°C	-20°C /+50°C
Leaf max dimension	1.5 m	1.3 m
Leaf max weight	120 kg	100 kg
Weight	12.4 kg	11.2 kg
Items no. per pallet	27	27

* Available in 115 VAC version