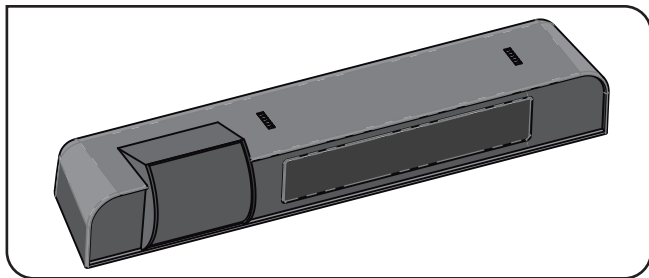


Infrared Radar MR27

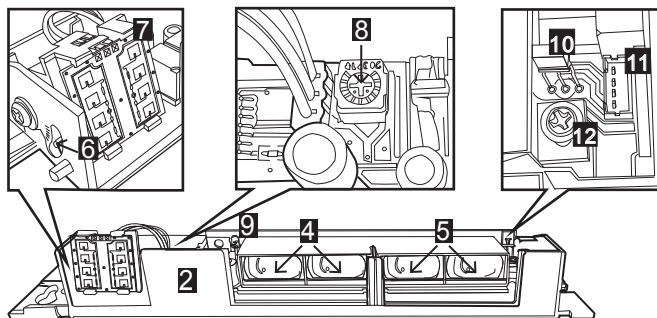
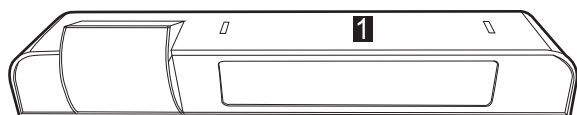
DOUBLE BEAM DETECTION / SAFETY

MANUAL OPERATION / INSTALLER



Read the following information carefully before using the product.

PRODUCT OVERVIEW



1	Cover	5	Receptor	9	Activation Indicator
2	Base	6	Angle of Inclination's Indicator	10	Safety Indicator
3	Lens	7	Radar Module	11	Main connector
4	Transmitter	8	Radar's Sensitivity Regulator	12	Infrared Adjusting Area

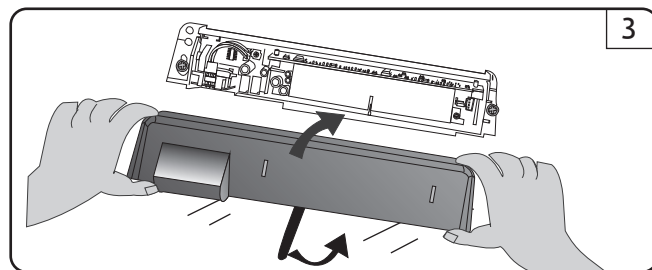
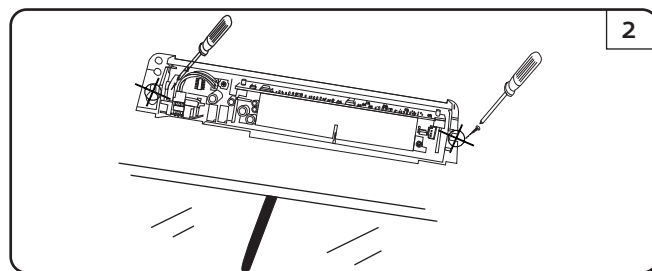
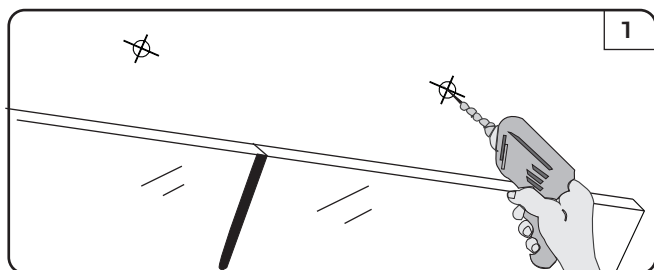
CHARACTERISTICS

- ▷ 2 in 1 sensors - Radar and photocells combined in a single product.
- ▷ 2 output relays - Motion and Presence.
- ▷ Developed for automatic sliding and revolving doors.

▷ With Self-Learning Function of the infrared sensor's action area. It allows to adapt automatically to changes in the area of infrared detection as well as fluctuations, distortion, movement, darkness and lightness.

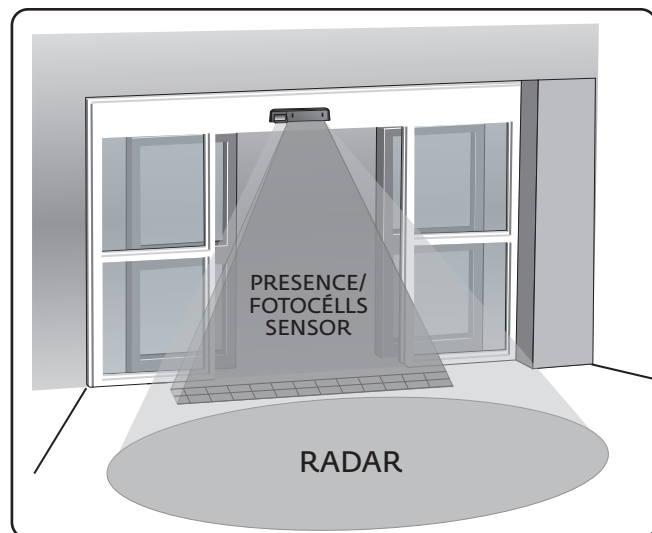
▷ This product adopts a microwave sensor with german origin, and it is not influenced by temperature and humidity, ensuring a reliable and safe performance. For installations up to 2.5 meters high.

INSTALLATION

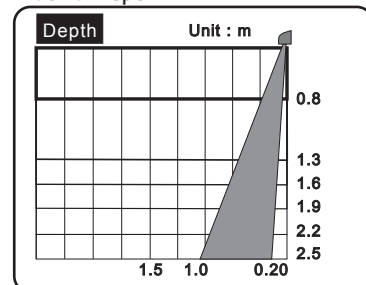
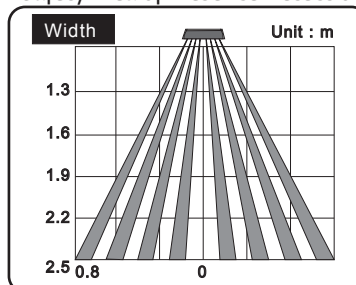


ACTIVATION AND SAFETY DETECTION RANGE

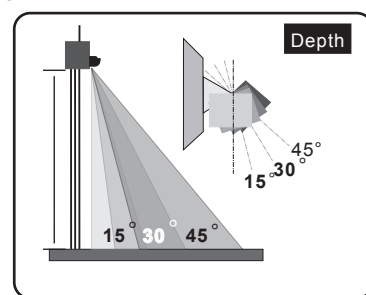
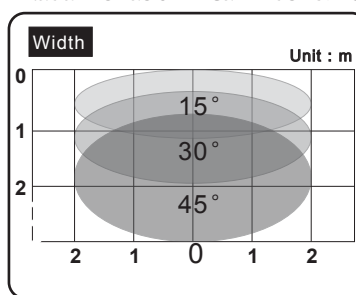
Detection areas:



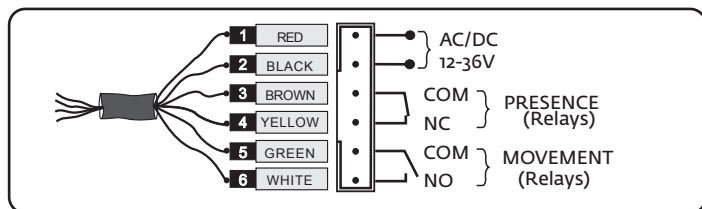
Safety Area of Presence Detection: Width & Depth:



Radar Ativation Area: Width & Depth:



WIRING DIAGRAM

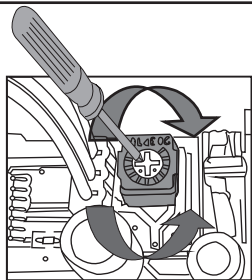


RADAR SENSIBILITY AJUSTMENT AND PRESENCE DETECTION AREA

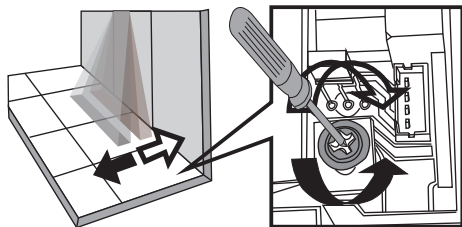
Radar Sensibility Ajustment

NOTE:

Increase Sensitivity - Rotate in a clockwise direction
Reduce Sensitivity - Rotate counter-clockwise direction.

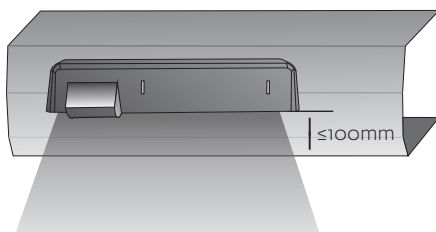


Presence Detection Area



For a detection area nearest the door turn the potentiometer in a clockwise direction.

For a detection area farthest from the door turn the potentiometer counterclockwise.

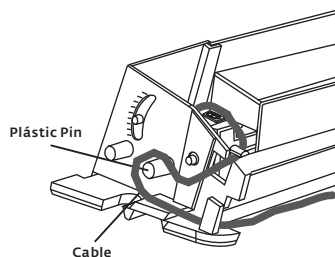


NOTE:

Please install the sensor $\leq 100\text{mm}$ above the chassis to avoid loss of sensitivity.

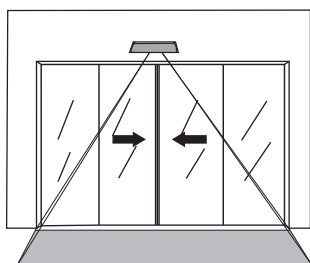
Passing the Cape

NOTE: Observe the correct cable path. This format allows complete isolation of possible water infiltration, serving to drain water. A correct placement of the wire provides an easier installation of the cover.

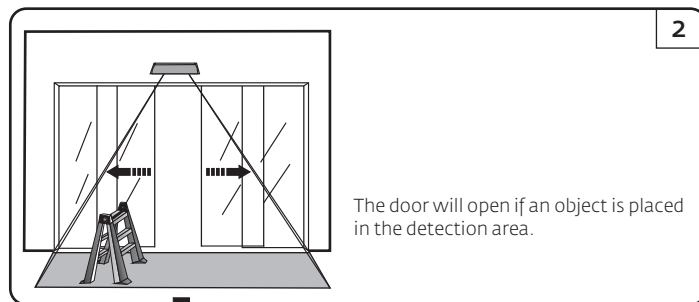


Presence Sensor's Detection Area

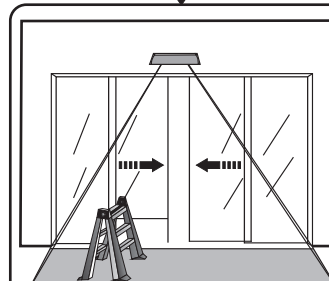
1



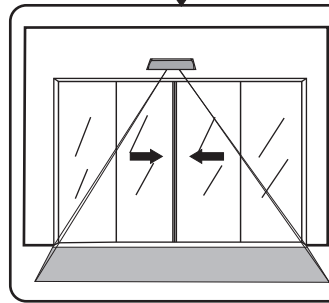
Please ensure that the area is object's free during the process of the sensor's self-learning.



The door will open if an object is placed in the detection area.



If after 18 seconds and no movement occurs within the infrared's area, the sensor will accept the object as part of the room and closes the door.



Remove the object. The system will send a environment reading signal and return to the original recording background.

TECHNICAL SPECIFICATIONS

MR27

▷ Power Supply	AC/DC 12 to 30V (-/+10%)
▷ Output	Relays
▷ Current (STANDBY)	65mA
▷ Current (Action)	130mA
▷ Cable Length	2500mm
▷ Instalation Max Height	2500mm
▷ Cover's Material	ABS

Presence Sensor

▷ Ray Type	Reflected Infrared
▷ Ray Source	Infrared 940nm
▷ Ray Quantity	8 emitted, 8 emitted
▷ Self-Learning Time	10 sec
▷ Operation's Indicator	Standby (blue)/Activ. (red)
▷ Temperature	-40°C a 60°C
▷ Detection Area	1600 (W) x 800 (D) mm
▷ Output Time	500ms
▷ Reply	$\leq 100\text{ms}$
▷ Optical Surface	PMMA

Radar

▷ Technology	Processor
▷ Frequency	24.125GHz
▷ Emission	<20dBm EIRP
▷ Transmission frequency density	<5mW/cm ²
▷ Detection Mode	Movement
▷ Detection Range	4m (W) x 2m (D)
▷ Output Time	0.5s
▷ Temperature	-20°C a 55°C